

Canadian Midwifery Regulators Consortium

The Consortium is a network of midwifery regulatory authorities founded to facilitate inter-provincial mobility, to advocate for legislation, regulation, and standards of practice that support access to a high standard of midwifery care across the country, and to provide a forum for Canadian regulators to discuss and take action on issues of mutual concern. A Mutual Recognition Agreement on Mobility for Midwives in Canada was signed in 2001 and updated in 2005. Other initiatives include the National Midwifery Assessment Strategy project, development of the CMRE, work with the federal Office of Controlled Substances on prescriptive authority for narcotics consistent with the midwife's scope of practice, and representation at various national forums and meetings.

Contact Us

CMRE Secretariat & NAS Secretariat:

College of Midwives of BC
210–1682 West 7th ave
Vancouver, BC V6J 4S6

General Secretariat:

College of Midwives of Ontario
55 St Clair Avenue West, Suite 812, Box 27,
Toronto, Ontario M4V 2Y7

www.cmrc-ccosf.ca

Members of the Consortium:

L'Ordre des sages-femmes du Québec
430, rue Sainte-Hélène, bureau 405
Montréal, Québec, H2Y 2K7
www.osfq.org

College of Midwives of Ontario
55 St. Clair Avenue West, Suite 812
Box 27, Toronto, Ontario, M4V 2Y7
www.cmo.on.ca

College of Midwives of Manitoba
235-500 Portage Avenue,
Winnipeg, Manitoba, R3C 3X1
www.midwives.mb.ca

Midwifery Health Disciplines Committee,
Alberta Health and Wellness
17th Floor, Telus Plaza North Tower,
10025 Jasper Avenue,
Edmonton, Alberta, T5J 2N3

College of Midwives of B.C.
210 -1682 West 7th Ave,
Vancouver, BC, V6J 4S6
www.cmbc.bc.ca

Health Professional Licensing
Department of Health & Social Services
Box 1320 – CST-8
Yellowknife, NT, X1A 2L9

CANADIAN MIDWIFERY REGISTRATION EXAMINATION

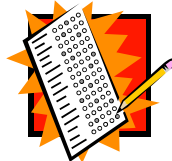
*Full Implementation Date:
Spring 2008.*



New Registration Exam

As of Spring 2008, all applicants for midwifery registration in Canadian jurisdictions outside Quebec will be required to pass the Canadian Midwifery Registration Examination (CMRE). This includes graduates of Canadian midwifery education programs as well as internationally-educated midwives being assessed for registration in Canada. The use of this exam in Quebec is still to be determined.

The purpose of the CMRE is to ensure that all entry-level registered midwives in Canada can practise to the same competency standards. Its goal is to protect the public and ensure a consistent standard of care across Canada.



EXAM

STRUCTURE

The CMRE is a seven hour exam, written in two 3.5 hour parts on the same day. Each part consists of a combination of multiple-choice questions and short answer questions. Both case-based and independent questions are included.

This paper-based examination will be offered in English and French at sites across Canada on the same day, once in the Spring and once in the Fall. There will be a fee for taking this exam. The exact dates and fees will be set in 2007.

HISTORY OF THE CMRE

In 2003 the Canadian Midwifery Regulators Consortium launched the HRSDC-funded National Midwifery Assessment Strategy (NAS) project. Among other activities, NAS supported midwifery regulators and educators from across Canada in creating the *Canadian Competencies for Midwives*. NAS research also resulted in a clear directive to create a national registration exam to ensure a consistent evaluation of midwives' competence to practise in Canada.

In April 2005, the Consortium contracted with Canadian exam development experts, Assessment Strategies Inc, to support the development of the national exam, using the *Canadian Competencies for Midwives* and a range of existing provincial midwifery exam resources as a starting point. Since that time many Canadian midwives and midwifery educators from each regulated jurisdiction have been involved in the development of the exam via blueprint development, item writing, exam piloting, item validation, and verification of translations. The exam will be implemented for internationally-educated applicants in BC, Alberta and Manitoba in the spring of 2006, and for all applicants in BC, Alberta, Manitoba, and Ontario by 2008. It will be implemented in Quebec if and when their legislation permits.



EXAM CONTENT

The CMRE is designed to ensure an applicant has the entry-level competencies that are described in the *Canadian Competencies for Midwives*. It is a criterion-referenced exam which means that a candidate is assessed, not against other students performance, but against the competencies required to practise safely.

The CMRE covers the scope of practice from antepartum care through to care of mother and baby to 6 weeks postpartum. It includes questions that test knowledge, application, and critical thinking related to both normal and abnormal situations. In order to reflect Canadian practice, questions are set in both hospital and out-of-hospital environments.

More specific information, including the Exam Blueprint, will be available in the Spring of 2006 at www.cmrc-ccosf.ca.

Canadian Midwifery Regulators Consortium

For more information:

www.cmrc-ccosf.ca

