

## Canadian Midwifery Regulators Consortium

The Consortium is a network of midwifery regulatory authorities founded to facilitate inter-provincial mobility, to advocate for legislation, regulation, and standards of practice that support access to a high standard of midwifery care across the country, and to provide a forum for Canadian regulators to discuss and take action on issues of mutual concern. A Mutual Recognition Agreement on Mobility for Midwives in Canada was signed in 2001 and updated in 2005. Other initiatives include the National Midwifery Assessment Strategy project, development of the CMRE, work with the federal Office of Controlled Substances on prescriptive authority for narcotics consistent with the midwife's scope of practice, and representation at various national forums and meetings.

## Contact Us

### CMRE Secretariat & NAS Secretariat:

College of Midwives of BC  
210–1682 West 7th ave  
Vancouver, BC V6J 4S6

### General Consortium Secretariat::

College of Midwives of Manitoba  
235-500 Portage Avenue  
Winnipeg, Manitoba, R3C 3X1

[www.cmrc-ccosf.ca](http://www.cmrc-ccosf.ca)

### Members of the Consortium:

L'Ordre des sages-femmes du Québec  
204 rue Notre-Dame Ouest, bureau 400  
Montréal, QC, H2Y 1T3  
[www.osfq.org](http://www.osfq.org)

College of Midwives of Ontario  
55 St. Clair Avenue West, Suite 812  
Box 27, Toronto, Ontario, M4V 2Y7  
[www.cmo.on.ca](http://www.cmo.on.ca)

College of Midwives of Manitoba  
235-500 Portage Avenue,  
Winnipeg, Manitoba, R3C 3X1  
[www.midwives.mb.ca](http://www.midwives.mb.ca)

Midwifery Health Disciplines Committee,  
Alberta Health and Wellness  
17<sup>th</sup> Floor, Telus Plaza North Tower,  
10025 Jasper Avenue,  
Edmonton, Alberta, T5J 2N3

College of Midwives of B.C.  
210 -1682 West 7<sup>th</sup> Ave,  
Vancouver, BC, V6J 4S6  
[www.cmbc.bc.ca](http://www.cmbc.bc.ca)

Health Professional Licensing  
Department of Health & Social Services  
Box 1320 – CST-8  
Yellowknife, NT, X1A 2L9

# CANADIAN MIDWIFERY REGISTRATION EXAMINATION

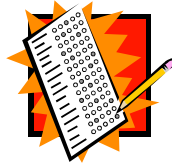
*Full Implementation Date:  
Spring 2008.*



## New Registration Exam

As of Spring 2008, all applicants for midwifery registration in Canadian jurisdictions outside Quebec will be required to pass the Canadian Midwifery Registration Examination (CMRE). This includes graduates of Canadian midwifery education programs as well as internationally-educated midwives being assessed for registration in Canada. The use of this exam in Quebec is still to be determined.

The purpose of the CMRE is to ensure that all entry-level registered midwives in Canada can practise to the same competency standards. Its goal is to protect the public and ensure a consistent standard of care across Canada.



## EXAM

### STRUCTURE

The CMRE is a seven hour exam, written in two 3.5 hour parts on the same day. All questions are in a multiple-choice format. Most are case-based.

This paper-based examination will be offered in English and French at sites across Canada on the same day, once in May and once in September. There will be a fee for taking this exam. See the website for exact dates and fees.

## HISTORY OF THE CMRE

In 2003 the Canadian Midwifery Regulators Consortium launched the HRSDC-funded National Midwifery Assessment Strategy (NAS) project . Among other activities, NAS supported midwifery regulators and educators from across Canada in creating the *Canadian Competencies for Midwives*. NAS research also resulted in a clear directive to create a national registration exam to ensure a consistent evaluation of midwives' competence to practise in Canada.

In April 2005, the Consortium contracted with Canadian exam development experts, Assessment Strategies Inc, to support the development of the national exam, using the *Canadian Competencies for Midwives* and a range of existing provincial midwifery exam resources

as a starting point. Since that time many Canadian midwives and midwifery educators from each regulated jurisdiction have been involved in the development of the exam via blueprint development, item writing, exam piloting, item validation, and verification of translations. The exam was implemented for internationally-educated applicants in BC, Alberta and Manitoba in the spring of 2006. It will be implemented for all applicants in BC, Alberta, Manitoba, and Ontario by 2008, and in Quebec if and when their legislation permits.



## EXAM CONTENT

The CMRE is designed to ensure an applicant has the entry-level competencies that are described in the *Canadian Competencies for Midwives*. It is a criterion-referenced exam which means that a candidate is assessed, not against other students performance, but against the competencies required to practise safely.

The CMRE covers the scope of practice from antepartum care through to care of mother and baby to 6 weeks postpartum. It includes questions that test knowledge, application, and critical thinking related to both normal and abnormal situations. In order to reflect Canadian practice, questions are set in both hospital and out-of-hospital environments.

More specific information, including the Exam Blueprint, is available at [www.cmrc-ccosf.ca](http://www.cmrc-ccosf.ca).

Canadian Midwifery Regulators Consortium

For more information:

[www.cmrc-ccosf.ca](http://www.cmrc-ccosf.ca)

